

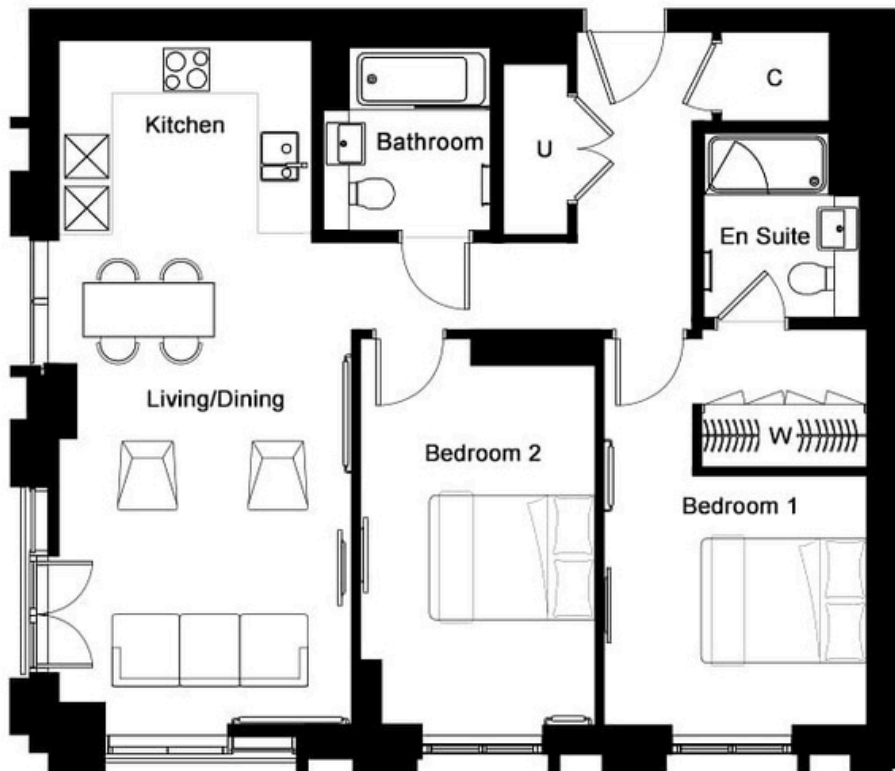


DALMY
GROUP
UK REAL ESTATE

TWELVETREES PARK WEST HAM

2 BEDROOMS APARTMENT
£720,000

TWELVETREES PARK WEST HAM LONDON, E16



DALMY
GROUP
UK REAL ESTATE

This large 2-bedroom apartment, located on the 12th floor, offers 24-hour concierge service, access to a residents' lounge and gym, and excellent transport links, just a two-minute walk from West Ham Station.

Step into a bright, open-plan living area where natural light pours through expansive windows, framing spectacular views of the O2 Arena and Canary Wharf. The sleek, modern kitchen features integrated appliances and stylish cabinetry, combining form and function for effortless cooking.

The principal bedroom provides a serene retreat with built-in wardrobes and a contemporary en-suite bathroom, while the second generously sized bedroom is versatile, ideal as a guest room, home office, or creative space. The main bathroom is finished to a high standard, complete with a full-size bath, overhead shower, soft lighting, and mirrored storage, balancing elegance with practicality.

LIVING ROOM



TWELVETREES PARK

WEST HAM

LIVING ROOM



TWELVETREES PARK

WEST HAM



TWELVETREES PARK

BEDROOM 1



WEST HAM

BEDROOM 2



TWELVETREES PARK



WEST HAM

BATHROOM



TWELVETREES PARK



WEST HAM

KITCHEN



VIEWS



TWELVETREES PARK

WEST HAM

AMINITIES



TWELVETREES PARK





Tenure	999 years
Service Charge	£5.99 per sq ft
Local Authority	Newham
Council Tax	Ask Agent
EPC	Ask Agent



DALMY
GROUP
UK REAL ESTATE

Contact us

+44 7479 003 867
meiyi@dalmy.co.uk

In accordance with the Property Mis-Description Act 1991, the following details have been prepared in good faith, and are not intended to constitute part of an offer or contract.
Any information contained herein (whether in the text, plans or photographs) is given in good faith but should not be relied upon as being a statement of representation of fact.
Nothing in these Particulars shall be deemed to be a statement that the property is in good condition or otherwise nor that any services or facilities are in good working order.
Any measurements of distances referred to herein are approximate only.