

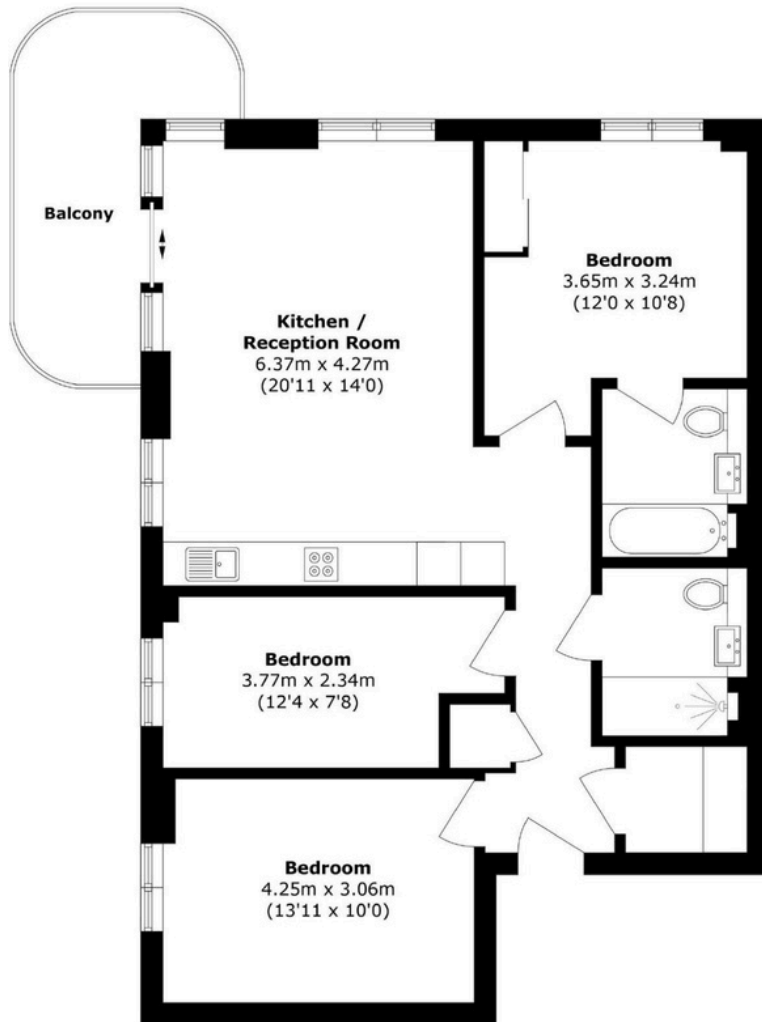


DALMY
GROUP
UK REAL ESTATE

KIDBROOKE VILLAGE WATERLILY COURT

3 BEDROOMS APARTMENT
£629,000

KIDBROOKE VILLAGE WATERLILY COURT LONDON, SE3



Total area (approx.): 86.4 sq. m (930.0 sq. ft)
Balcony area (approx.): 10.6 sq. m (114.1 sq. ft)



**DALMY
GROUP**
UK REAL ESTATE

A refined and contemporary three-bedroom apartment on the 9th floor, offering 930 sq.ft of internal space and an additional 114 sq.ft balcony. With dual northeast and northwest aspects, the home enjoys abundant natural light and sweeping views of the London skyline and surrounding parkland.

The bright high-floor layout includes three bedrooms and two bathrooms, complemented by exceptional on-site facilities such as a 24-hour concierge, swimming pool, private cinema, and gym.

Residents benefit from outstanding connectivity: Kidbrooke Village Station sits within the development, providing a 15-minute rail link to London Bridge, while bus routes offer a 15-minute connection to Greenwich Underground. Daily conveniences—including a Chinese supermarket, GP clinic, dentist, and organic grocer—are located within the community.

LIVING ROOM



KIDBROOKE VILLAGE

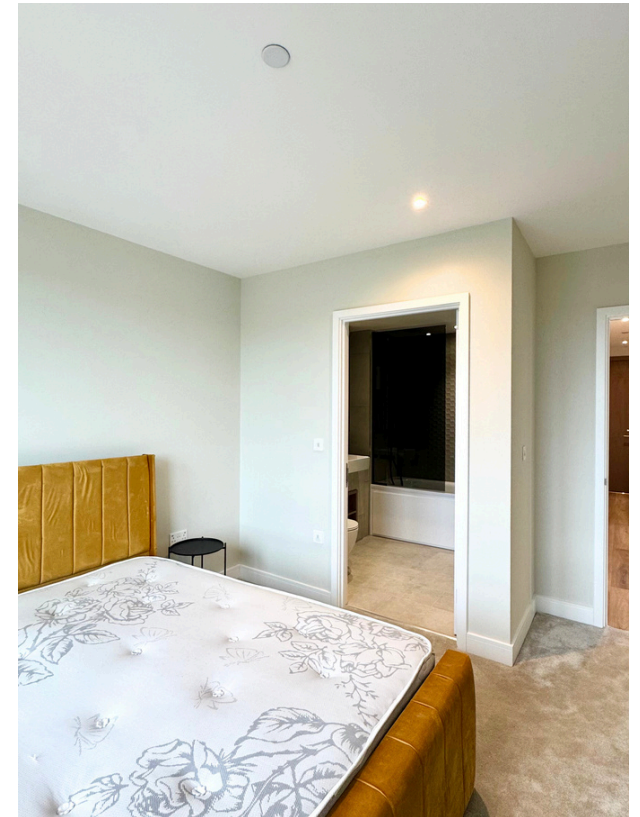


WATERLILY COURT



KIDBROOKE VILLAGE

BEDROOM 1



WATERLILY COURT

BEDROOM 2



KIDBROOKE VILLAGE



WATERLILY COURT

BEDROOM 3



KIDBROOKE VILLAGE



WATERLILY COURT

BATHROOM

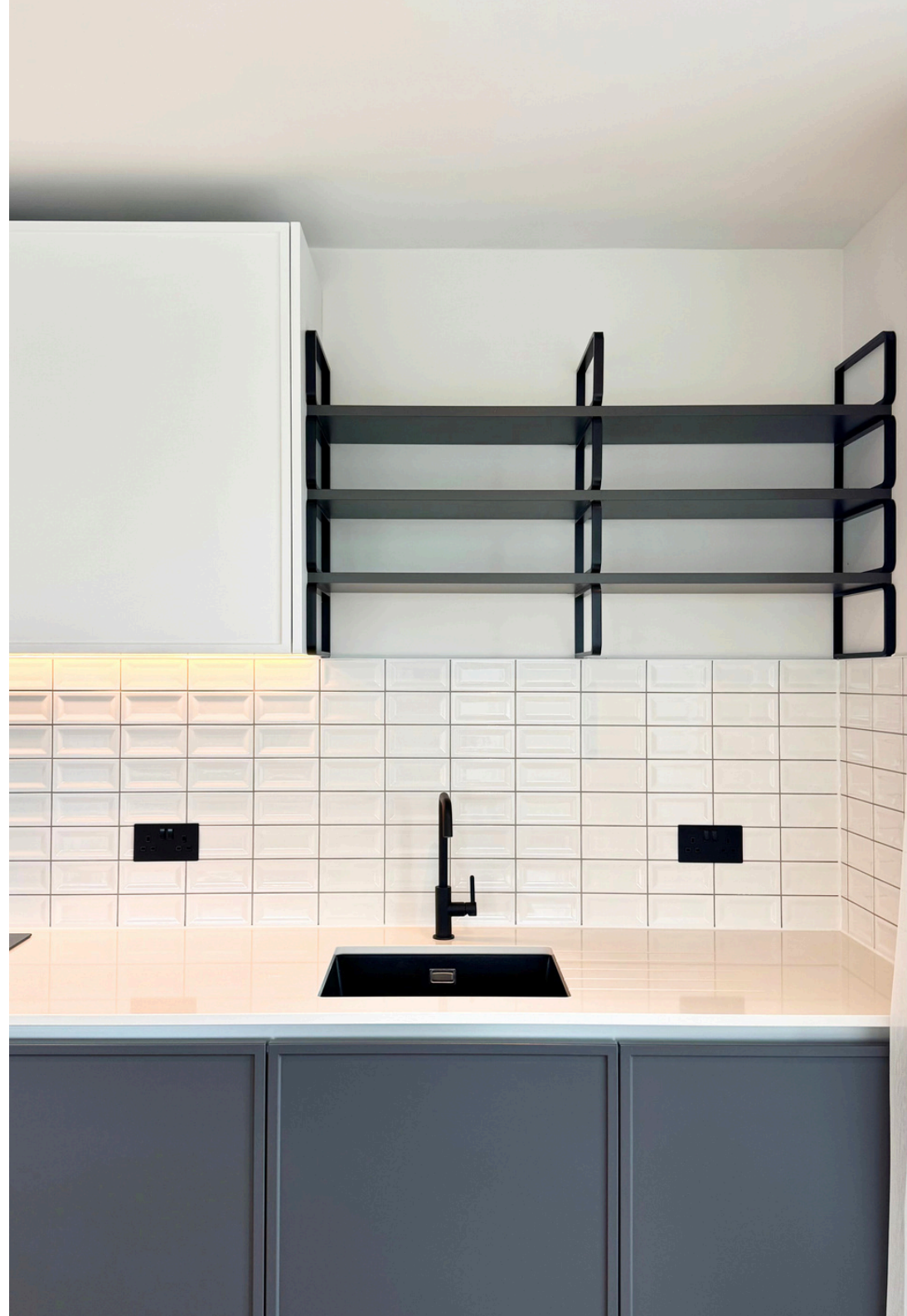
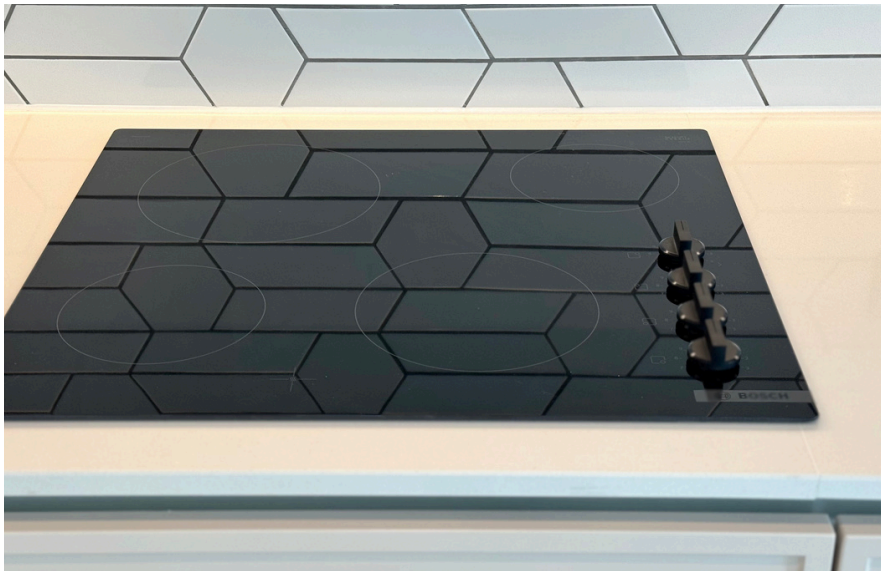


KIDBROOKE VILLAGE



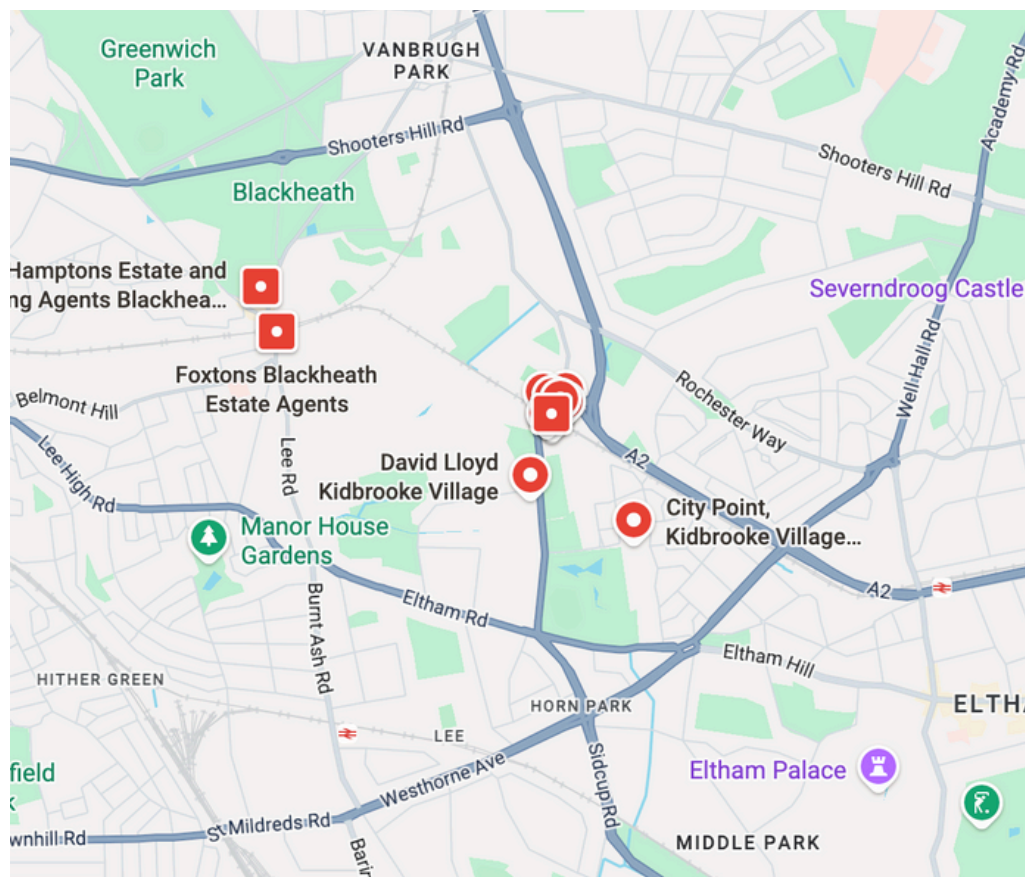
WATERLILY COURT

KITCHEN



VIEWS





Tenure	999 years
Service Charge	£4.5 per sq ft
Local Authority	Royal Borough of Greenwich
Council Tax	Ask Agent
EPC	Ask Agent



DALMY
GROUP
UK REAL ESTATE

Contact us

+44 7479 003 867
meiyi@dalmy.co.uk

In accordance with the Property Mis-Description Act 1991, the following details have been prepared in good faith, and are not intended to constitute part of an offer or contract.
Any information contained herein (whether in the text, plans or photographs) is given in good faith but should not be relied upon as being a statement of representation of fact.
Nothing in these Particulars shall be deemed to be a statement that the property is in good condition or otherwise nor that any services or facilities are in good working order.
Any measurements of distances referred to herein are approximate only.